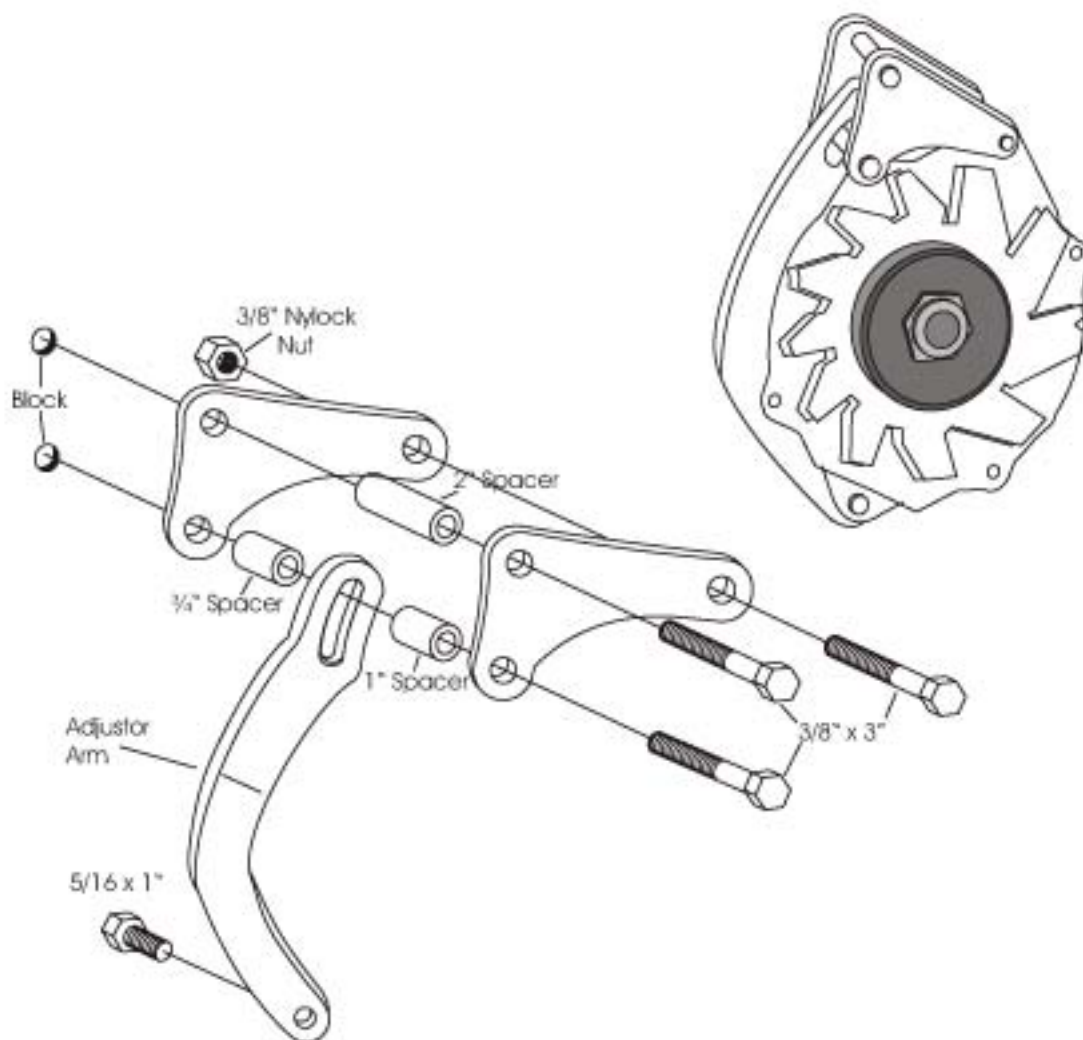




www.thompsonsgarage.com



(We use a belt length of 42½ to 43½" with this mount on installations in our shop. However; this can vary with the diameter of your pulleys.)

As with any part of this nature, make sure it fits your application before painting or plating. Parts that have been painted, plated, or modified may not be returned.

PHONE: 513-237-4428

FAX: 513-936-9547

NO
BILLET

YOUR TRADITIONAL ROD & CUSTOM STORE